



# Kwetter Letter

NUMBER 33 OF 2021 : 28/10/2021

= Please read all the information =



## 1. STAFF MESSAGE

Continuous assessment is taking place.

**It is important that your child attends school every day.**

Your cooperation, in the interest of your child's progress,  
is appreciated.

**The School and After-School Centre will be closed  
on Monday, 1 November 2021.  
(National Public Holiday – Election Day)**

The Primary School will start with exams soon and the school will therefore adjourn earlier, from 12 November 2021. Please see the Riebie Chatter in this regard. New Hasia Kwassie times will be communicated in next week's Kwetterletter.



## 2. Birthdays

- Congratulations to our learners celebrating their birthdays in NOVEMBER! Hope you have loads of fun!

Teacher Sonja : Stacey 01/11; Rori 03/11; Mphiwe 16/11

Teacher Lynette : Jordan 04/11; Karah 13/11; Anemé 15/11; Gideon 25/11

Teacher Cathy : -

Teacher Anke : Dakota 21/11

**NB:** We know that birthdays are very special, but we can unfortunately not allow any party packs, cupcakes, or any refreshments at school during the period of Covid.



### 3. Extra Mural Activities

Monday	-	Playball ; Drama ; Ballet
Tuesday	-	Golf ; Swimming
Wednesday	-	Netball ; Rugby Academy - <b>(Remember tackies)</b>
Thursday	-	Swimming ; Tennis - <b>(Remember tackies)</b>
Friday	-	Dance Mouse

Playball	Debbie 082 440 4708	Golf	Jonathan 074 369 0253
Swimming	Ellen 082 920 8747	Ballet	Karlien 083 297 5714
Netball & Rugby Academy	Venessa 083 660 4707 Dawid 081 575 2682	Tennis	Diaan 071 895 1619
Dance Mouse	Elden 078 998 3688	Drama	Lydia 073 829 0593

**Please remember:**

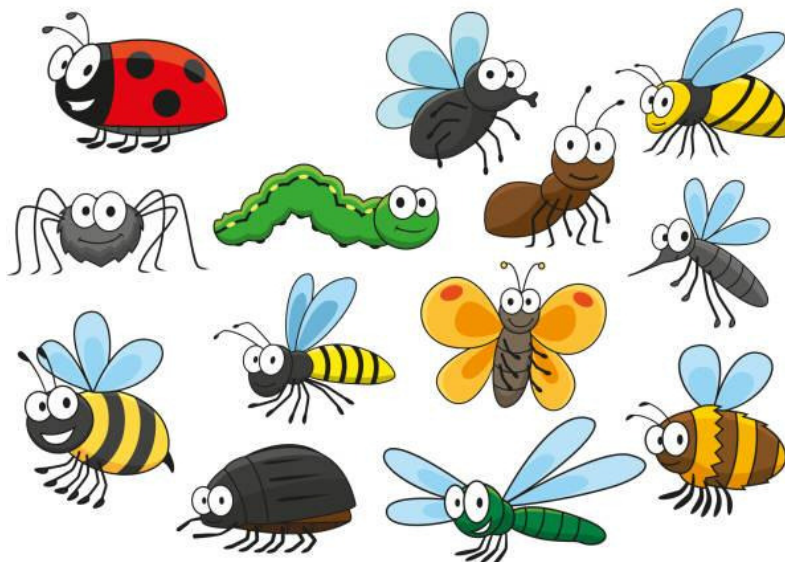
- All extramural activities taking place outside, are subject to weather conditions.
- The activity cannot be presented if it rains.
- Please contact the relevant coaches directly if you have any queries.



### 4. Theme for the week

**2/11/2021 – 5/10/2021**

#### INSECTS





## 5. Educational

### 5.1 ASSESSMENT

- Parents must please work through the 4<sup>th</sup> term assessments which you received.
- It gives clear guidelines of what is expected from your child with regards to his/her **school readiness**.

### 5.2 WE LEARN TO WRITE LETTERS

- The correct method of writing is very important.
- Start at the dot, look at the arrow and follow the direction of the arrow.  
*See example on the hard copy annexure that your child receives with the newsletter - Letters "s" & "t".*

### 5.3 SKIP WITH YOUR SKIPPING ROPE

- Learners must please practice at home how to skip with a skipping rope.
- Take one step at a time.
- Our little ones are getting smart skipping with their skipping ropes. We believe parents are joining in the fun and getting fit 😊😊

### 5.4 BOUNCE AND CATCH A BALL

- Play and practice at home.
- Bounce a ball and catch it (large ball).
- Stand in one place and bounce ball with each hand (alternating hands).

### 5.5 BE ON TIME

- We remind parents that your child must be at school at the latest by 07:15.
- Thank you to all the parents who drops off our Hasie Kwassie learners on time.





## 6. General

### 6.1 IMPORTANT DATES

Please diarise the following important dates:

#### Thursdays

#### Fridays

03 November

12 November

18 November

19 November

08 December

15 December

#### News file

#### News file back

Know-my-Teacher: Grade R (2022)

Primary school exams start

In-house Show

Sounds Day (only for learners)

Graduation

School closes

- PLEASE KEEP WATCHING THE KWETTER LETTER FOR MORE INFORMATION REGARDING THE ABOVE.

*This programme is subject to change.  
Please also refer to the Riebie-Chatter  
Web & D6*

### 6.2 CONTACT THE SCHOOL

- Should you have to contact a Hasie Kwassie staff member, please call between **10:30 and 11:00** and ask to speak to your child's Teacher.

### 6.3 KNOW-MY-TEACHER WALK-THROUGH EVENT: GRADE R (2022)

**Date : 3 November 2021**

**Time : 17:00 – 19:00**

- Grade R (2022) parents already received email notifications. Please keep checking your email for further information and arrangements regarding the event.
- We are looking forward to meeting all the new Hasie Kwassie learners of 2022 !

### 6.4 IN-HOUSE SHOW

**Date : Thursday, 18 November 2021.**

**Cost : R35-00** (send in marked envelope before/on 16 November 2021).

- "On Cue" Theatre presents: "Summer, holiday", and safety in the water".
- All our Hasie Kwassie friends are going to enjoy this year-end show!

## 6.5 SOUNDS DAY

**Date : Friday, 19 November 2021, in the School Hall**

- This day is a fun day for our Grade R learners.
- Choose one letter from the alphabet.
- Choose a word starting with this letter, for example: b – bear; f – fairy; k – king.
- Come to school on this day, dressed according to the theme.
- Be original and creative. We are going to show all our friends .
- PLEASE RETURN THE TEAR-OFF SLIP THAT YOU RECEIVED, TO THE SCHOOL.

## 6.6 GRADUATION

**Date : 8 December 2021**

**Venue : School Hall**

- More information will be made available to parents in due course.
- Graduation photos and diplomas, which were paid for, will be received during the Graduation.

## 6.7 GRADE 1 – 2022

### **Grade 1 - 2022**

Current Grade R learners who applied at the school and will be enrolling at the school, will start receiving enrolment documents during the month of November (in phases).

As you are aware our time is limited, due to the departmental online enrolment and placement process taking place later than usual. We would like to streamline the process as much as possible in order to continue with the arrangements for the parent information session, etcetera.

The school will communicate with parents throughout November regarding the official Grade 1 enrolment process. Due to time constraints, we are planning to do the process in phases.

All other information regarding the enrolment process, as well as Grade 1 parent information, stationery lists, etcetera, will be communicated to parents during the month of November.

If you have any uncertainties or queries, please send an email to [naomi@riebie.co.za](mailto:naomi@riebie.co.za)

Please also keep checking the school newsletters and the d6 for further information in this regard.

## 6.8 LAERSKOOL VAN RIEBEECKPARK YEARBOOK

The first in its kind at Laerskool Van Riebeeckpark Primary – a **Yearbook!** Thank you to all the parents who have shown interest in supporting the school with the Yearbook.

If you have made a request to place an advert, please take note of the size of the advert. Please keep in mind that the Yearbook will be displayed in “*landscape*”.

**A4 Full page = 297mm width x 210mm length**

**and**

**A5 = 148mm width x 210mm length**

**ORDER AND PAY FOR YOUR YEARBOOK NOW**

**@ ONLY R250.00 PER YEARBOOK**

**We kindly request our parents to support us.**

Bank	:	FNB
Branch Code	:	205609
Account Number	:	6274 913 4243
Reference Number	:	9719 Yearbook

For any other enquiries, please email Mrs. J. Ruthven at [julie@riebie.co.za](mailto:julie@riebie.co.za).

## 6.9 TRAFFIC ARRANGEMENTS AND SAFETY AROUND THE SCHOOL

Thank you to all our Hasie Kwassie parents for practising safety and caution when dropping off their children.

Please ensure that third parties and individuals responsible for the transport of your child, are informed of the arrangements, as communicated in last week’s newsletter.

The safety of our learners and parents are of utmost importance to us. Thanking you in advance for your cooperation and support.



## 7. Finance

SCHOOL FEES FOR HASIE KWASSIE IS R1530-00 per month,  
PAYABLE IN ADVANCE FOR 12 MONTHS.

### **BANK DETAILS**

Name	:	VAN RIEBEECKPARK PRIMARY
Bank	:	FNB (CHEQUE ACCOUNT)
Branch code	:	205609
Account Number	:	62749134243
Reference	:	Gr R and Child’s name & surname

- Contact Ms Liesl van Straaten in the finance office for any enquiries.

## **SCHOOL FEES for 2022**

### **GRADE 1**

- |   |                           |
|---|---------------------------|
| ❖ During enrolment ( <i>Workbook package included</i> )     | R 1, 600.00               |
| ❖ R1, 545.00 x 11 months (1 January 2022 - 1 November 2022) | R16, 995.00               |
| <b>TOTAL PAYABLE</b>  | <b><u>R18, 595.00</u></b> |

OR

- |   |                           |
|---|---------------------------|
| ❖ During enrolment ( <i>Workbook package included</i> )   | R 1, 600.00               |
| ❖ <b>Once-off payment</b> of R15, 450.00 for school fees before or on 28 February 2022, to qualify for one month rebate (R16, 995.00 – R1, 545.00 = R15, 450.00). | R15, 450.00               |
| <b>TOTAL PAYABLE</b>  | <b><u>R17, 050.00</u></b> |

### **GRADE 2 – GRADE 7**

- |   |                           |
|---|---------------------------|
| ❖ R1, 545.00 x 11 months (1 January 2022 - 1 November 2022) | <b><u>R16, 995.00</u></b> |
|---|---------------------------|

OR

- |   |                           |
|---|---------------------------|
| ❖ <b>Once-off payment</b> of R15, 450.00 for school fees before or on 28 February 2022, to qualify for one month rebate (R16, 995.00 – R1, 545.00 = R15, 450.00). |                           |
| <b>TOTAL PAYABLE</b>  | <b><u>R15, 450.00</u></b> |

### **GRADE R**

- |  |                           |
|--|---------------------------|
| ❖ During enrolment ( <i>Excluding compulsory T-shirts</i> )  | R 1, 625.00               |
| ❖ School fees (R1, 625.00 x 12) - the first month's instalment must be paid before or on 30 November 2021 and the last payment by 1 November 2022. | R19, 500.00               |
| <b>TOTAL PAYABLE</b>   | <b><u>R21, 125.00</u></b> |

OR

- |  |                           |
|--|---------------------------|
| ❖ During enrolment ( <i>Excluding compulsory T-shirts</i> )  | R 1, 625.00               |
| ❖ <b>Once-off payment</b> of R17, 875.00 before or on 28 February 2022, to qualify for one month rebate. (R19, 500.00 – R1, 625.00 = R17, 875.00). | R17, 875.00               |
| <b>TOTAL PAYABLE</b>   | <b><u>R19, 500.00</u></b> |

### **General:**

Parents must please note that school fees for 2022 is debited as an annual amount and not monthly.



**RIEBIE RAKKERS AFTER-SCHOOL CENTRE**

After-School fees (R825.00 x 12)

R9, 900.00**TOTAL PAYABLE****R9, 900.00**

- ❖ R825.00 x 12 months of which the first month's instalment must be paid before or on 1 January 2022 and the last payment by 1 December 2022.

OR

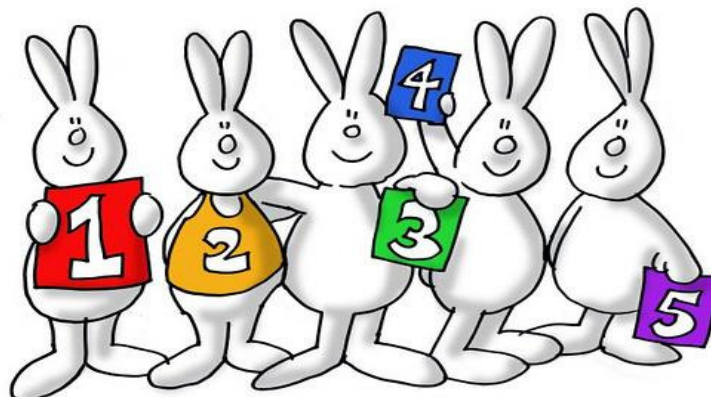
- ❖ **Once-off payment of R9, 075.00** before or on 28 February 2022, to qualify for one month rebate (R9, 900.00 - R825.00 = R9, 075.00).

**8. Waiting Class****2 November 2021 – 5 November 2021****Classroom: Teacher Sonja****WAITING CLASS 12:30 – 14:00**

**(Waiting class rotates between classes on a weekly basis. Waiting class is only for learners with older siblings in Van Riebeeckpark Primary School).**

**NO WAITING CLASS ON FRIDAYS.****TUCK SHOP : TOMORROW, 29 OCTOBER 2021.**

Remember your wallet around your neck.

**Please note: There will be no tuckshop if it rains.****LYNETTE | SONJA | CATHY | ANKE | VERUSHKA**